

Flight Plan Newsletter

September 2008

Welcome to our new butterflies!

Girls' Flight #19, June 20-22, 2008

Table of FROG: Kelsea Bryant, Olivia Burton, Serena Clark and Emily Griser

Table of Wondrous Wings: Sia DuFour, Jasmin Banachowski, Catherine Windmeyer and Jackie Morrill

Table of Cupcake Comrades: Linnea Mack, Tessa Deckebach, Rosemary Sorg and Jessica Ray

Table of the Sisterhood of the Godly Goddesses: Tawni Ernsberger, Colleen Grondin, Kaihle Sauder and Megan Spieth

Table of the Sisterhood of the WBAPG: Taylor Zehr, Ariana Espinoza and Courtney Perry

Boys' Flight #19, August 1-3, 2008

Table of Christ Boyz A.K.A Gansta's for the JC Fo Shizzle: JJ Harris, Tyler Murrey and Ben Springer

Table of 1 Heaven: Eric Richards and Evan Allen

Table of Really Cool Victorious Men of Jesus: Vic Linn, James Greek and Chris Baker

Table of the Green Magoy: Cody Sauder, Allyn Hunter and Riley Debacker



Girls' Flight 19 Team

Lay Director- Lana Shryock

Lay Director in Training- Marilyn Waite

Spiritual Director- Pastor Kurt Tomlinson

Assistant Live-in Spiritual Director- Pastor Cliff Binion

Assistant Lay Directors- Sadie Albon, Erin Nowak and Casey McDaniel

LOGS- Mary Albon-Brown, Rita Bare, Paula Schings and Keri Shryock

Adult Table Leaders- Melinda Armstead, Amy Blankenship, Susan Holbrook, Debbie Powazki and Dodie Tansel

Youth Table Leaders- Heather Cechner, Riley McDaniel, Brooklynn Moor, Lauren Sheehan and Lydia White

Music Director- Clare Cechner

Assistant Music Director- Catie Holbrook

Assistant Spiritual Directors- Pastor Mary Kay, Pastor Lindy Maurice-Saum and Pastor J. Mark Holbrook

Boys' Flight 19 Team

Lay Director- Terry Roose

Lay Director in Training- Jim Jackson

Spiritual Director- Pastor Kurt Tomlinson

Assistant Live-in Spiritual Director- Pastor Paula Stewart

Assistant Lay Directors- Doyle Ayers, Brent Gnagey and Tony Plouck

LOGS- Clark Myles, Scott Smith, Roy Colon and Chris Blitz

Adult Table Leaders- Kurt Lilemon, Randy Oser, Chuck Campos and Al Martin

Youth Table Leaders- Brian Campos, Michael Deckebach, Rory Ladd and Daniel Rhollans

Music Director- Cort Goshia

Assistant Spiritual Directors- Nick Woodall, Diane Shaffner and Bill Holsopple



Mark Your Calendars!

There is a HOOT coming up! October 26th from 5-8pm at Widewater Retreat and Ministry Center (Rt 24 - CR 4 ... Liberty Center, OH (actually Texas, Ohio)). Remember anyone can come to a hoot, even if you have not been on a Chrysalis flight. Bring your friends!

Who can I sponsor for a flight?? At the closing of your original flight, you were encouraged to sponsor 1 person/friend a year on a Chrysalis flight. I'm sure you all went home that Sunday, thinking of people you wanted to have experience the weekend. Some of you even mentioned it when you shared at closing. I encourage you, as Chrysalis community members, to revisit those thoughts and that passion, and to be thinking of a girl(s) you can sponsor in November or a boy(s) you can sponsor in February. A lot of prayer, time and effort goes into the team formation process. The more butterflies we have, the stronger the community is. Please be praying about who you can share the gift of Chrysalis with. Remember there are scholarships available. You could also ask the people who sponsored you (youth or adult) to help you with the process. I'm sure they would love to help you out. In Christ, Beth Figley...Leadership Chair

Chrysalis Board Changes

Thank You to Outgoing Board Members!

ADULTS: Susan Bascom, Jim Jackson, Jan Locy, Bruce Schwabel, Mark Holbrook, Brenda Short and Lana Shryock

YOUTH: Danielle Clark, Julie Morrill and Emily Schings

Welcome New Board Members!

ADULTS: Sara Myles, Polly Richardson, Terry Roose, Erin Nowak, and Sadie Albon

YOUTH: Kerri McEwen, Ben Hartford, Brett Whisler, Mike Schings and Daniel Rhollans

AGAPE NEEDED!

Okay, friends, jump in and get some agape ready for the Girls' Flight coming up in November!!

How many? 65 for the whole Flight
- 35 for bugs only.

Providing agape is a big bunch of fun!! Thanks! Polly Richardson
(Agape Chair)



BORED WITH YOUR BOARD GAMES?

Donate them to Chrysalis! Chrysalis is looking for gently used board games (such as Apples to Apples or Taboo) for butterflies to play during breaks. If you have any you would like to donate please bring them with you to the upcoming girls' flight.



Upcoming Flights

Girls' Flight #20 November 7-9, 2008

Team for Girl's Flight #20:

Lay Director: Marilyn Waite, Lay Director in Training: Beth Figley

Spiritual Director: Beth Giller, Assistant Live-in Spiritual Director: Karen Shepler

ALDs: Kris Jackson, Kelsey Gruenhagen and Margie Smith

Music Director: Beth Figley, Assistant Music Director: Cassie McDaniel

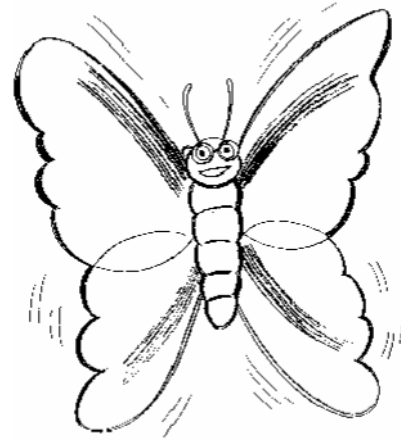
LOGS: Sara Myles, Vicki Adam, Val Plouck and Linda Wheeler

Adult Table Leaders: Jan Locy, Viki Mack, Debbye Hoffman, Beth Morrill, Kim Lerma and Sylvia Temple

Youth Table Leaders: Katie Beerbower, Danielle Clark, Kelsey Coulter, Kerri McEwen, Julie Morrill and Erin Sheehan

Opportunities to Serve

- Sign up for the 72 hour prayer vigil.
- Sign up to help in the kitchen.
- Sign up to help with logistics.
- Attend candlelight and closing.
- **SPONSOR A BUTTERFLY!**



More information on any of these opportunities is available at www.nwochrysalis.org

A reminder about weekend servanthood...

Thank you to all of you who serve behind the scenes in so many ways throughout the course of a Chrysalis weekend. You are vital to helping a weekend happen. Please remember that we are called to be silent servants as much as possible. This means we should have minimal contact with the team and the butterflies we are serving. Also, once candlelight is over on Saturday night, we need to exit the church as soon as possible. If you need to finish agape, please leave the premises as soon as you are done. We need to remember and respect that the entire church is potential "sanctuary" for the flight. The cry room in the back of the sanctuary is off limits to the community at ALL times during a flight weekend. If the weekend becomes about anything other than the butterflies and their transformation, we are not serving in the right spirit. Thank you for your continued prayers and servanthood for Chrysalis. Blessings, Beth Figley...Leadership

Northwest Ohio Chrysalis

Office of Chrysalis

c/o Maumee United Methodist

405 Sackett St

Maumee, OH. 43537

"Return Service Requested"



Board of Directors

Spiritual Director

Chairman

Leadership

Secretary/Treasurer

Apage

Good Shepherd

Kitchen

Logistics

Newsletter

Outreach

Registrar

Social

Sponsorship

Supply

Worship

Agape - Youth

Kitchen - Youth

Outreach - Youth

Worship - Youth

Logistics - Youth

Social - Youth

Rusty Coey

Beth Figley

Sara Myles

Polly Richardson

Terry Roose

Beth Morrill

Doyle Ayers

Erin Nowak

Vicki Adam

Kris Jackson

Sadie Albon

Roseann Clark

Tim Mack

Margie Smith

Kerri McEwen

Ben Hartford

Josh Davies

Dan Rhollans

Brett Whisler

Mike Schings

spiritualdirector@nwochrysalis.org

chairperson@nwochrysalis.org

leadership@nwochrysalis.org

secretarytreasurer@nwochrysalis.org

agape@nwochrysalis.org

goodshepherd@nwochrysalis.org

kitchen@nwochrysalis.org

logistics@nwochrysalis.org

newsletter@nwochrysalis.org

outreach@nwochrysalis.org

registrar@nwochrysalis.org

social@nwochrysalis.org

sponsorship@nwochrysalis.org

supply@nwochrysalis.org

worship@nwochrysalis.org

agapeyouth@nwochrysalis.org

kitchenyouth@nwochrysalis.org

logisticsyouth@nwochrysalis.org

worshipyouth@nwochrysalis.org