

Flight Plan Newsletter

January 2009

Welcome to our new butterflies!

Girls' Flight #20, November, 2008

Table of God's Chex Mix: Hannah Cheon, Bailey Fleming, Rachel Hamman, Hannah May and Heather Sears

Table of the Royal Hogs: Chloe Butler, Beth Howell, Abbey Mellow, Heather Ramsey and Angela So

Table of Daddy's Girls: Dani Brubaker, Hannah Holsopple, Chelsea Jones, Sarah McDermott and Leigh Ann Pickering

Table of Sister of Salvation: Victoria Burkhart, Rachel Hefflinger, Ericca Lehman, Hillary Locy and Jordan Riegsecker

Table of Skittles: Elisa Dunlap, Hannah Leonhard, Callen Saunders, Mallory Spieth and Lauren Stuckey

Table of the Pink Ladies: Jodi Burkhart, Erin Koffman, Marin Lindsay, Kelsey Lockwood and Kellie Mace

Table of Many Lame Daughters Excited About Heaven's King: Alex Burchfield, Lauren Meyers, Emily Richards, Haley Rufenacht and Melissa Tippin



Girls' Flight 20 Team

Lay Director- Marilyn Waite

Lay Director in Training- Beth Figley

Spiritual Director- Pastor Beth Giller

Assistant Live-in Spiritual Director- Pastor Lindy Maurice-Saum

Assistant Lay Directors- Kelsey Gruenhagen, Kris Jackson and Margie Smith

LOGS- Vicki Adam, Sara Myles, Val Plouck and Linda Wheeler

Adult Table Leaders- Debbye Hoffman, Marsha Horner, Vicki Mack, Sheila Gruenhagen, Jan Locy, Beth Morrill and Sylvia Temple

Youth Table Leaders- Julie Morrill, Danielle Clark, Kerri McEwen, Katie Beerbower, Amy Campbell, Kelsey Coulter and Erin Sheehan

Music Director- Beth Figley

Assistant Music Director- Cassie McDaniel

Assistant Spiritual Directors- Pastor Waverly Earley, Pastor Bill Holsopple and Pastor Cheryl Matla

My Next Steps

By: Ben Hartford

I've always had a pretty good relationship with Jesus Christ. I grew up in a very strong Christian home and we went to church every Sunday. I was involved in different things at my church and community. When I was a young teen my parents went on their Emmaus walk's. After that, they really wanted me to experience a Chrysalis flight. I wasn't too excited about going, and though they didn't force me to go, I went because it was important to them. Turns out it was one of the best decisions I have ever made. My weekend was awesome. The food, the people, the worship, the building a stronger relationship with God. Since my flight, I've really tried hard to get others from my community to go. Also I have tried to stay involved in the Chrysalis community. I served on flight 14 as a youth table leader and loved every second of it. I am also now on the Chrysalis board and work in the kitchen. I love serving because it reminds me of all the memories and feelings I felt when I was first on my flight. It was worth every second of the time I gave up for that one weekend to be able to give 3 solid days to God and see how he can change my life and the people around me. Chrysalis is truly an amazing and once in a lifetime experience.

If you have a next steps message you would like to share please e-mail it to Erin at actionjac2@aol.com.

We mourn the loss of two of our own...

Clarissa Short (NWO girls' flight #12) died on October 18 as a result of injuries she sustained in an ATV accident. Clarissa was home on fall break from Malone College where she was studying to be a nurse. Clarissa served as a youth table leader on flights 13 and 15. Anyone who knew Clarissa will remember her wonderful smile, her love for life and, most importantly her passion for Christ. She confidently relied on God to guide and direct her life. A separate offering was taken at the November candlelight, to be given in Clarissa's name to a charity of the family's choice. At this writing more than \$400 has been collected. Thank you for your generosity in helping keep Clarissa's memory alive. Please continue to keep her family (Rod, Brenda, Arrin, Ashley and Mike Zimmerman) in your thoughts and prayers...



Keri Shryock (NWO girls' flight #6) died on December 18, as a result of injuries she sustained in a fall while participating in a Christmas pageant at her church in Cincinnati. Keri was a graduate of BGSU with a degree in psychology and a first year graduate student at Xavier University studying Community Counseling. Keri, also very active in the Chrysalis community, served on 8 teams in various capacities. She will be fondly remembered for her smile, her humor, her kind and compassionate heart, and especially her love for Jesus Christ. Keri embraced life and all it had to offer. The joy of the Lord was truly her strength. Please continue to keep her family (Paul, Lana, Christopher, William, Rhonda and Ethan) in your thoughts and prayers...

The Chrysalis community has suffered a tremendous loss with both of these tragedies. We are grateful to both families for allowing us to know, use and love their daughters, as they so faithfully served Jesus Christ. We have seen only a glimpse of how many lives were touched by the love, faith and witness of Clarissa and Keri. You are lovingly remembered and will be forever missed.

To the Short and Shryock families...we mourn with you and we will continue to pray for God's loving arms to enfold you.



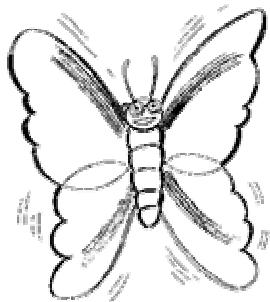
Upcoming Flights

Boys' Flight #20: March 6-8, 2009

Girls' Flight # 21: June 26-28, 2009

Opportunities to Serve

- Sign up for the 72 hour prayer vigil.
- Sign up to help in the kitchen.
- Sign up to help with logistics.
- Attend candlelight and closing.
- SPONSOR A BUTTERFLY!



*Be sure to check the dates at the bottom of the registration forms, some forms had incorrect dates for the girls' flight.

Upcoming Emmaus Walks:

Men: February 12-15, 2009

Women: February 19-22, 2009

More information on any of these opportunities is available at www.nwochrysalis.org



BORED WITH YOUR BOARD GAMES?

Donate them to Chrysalis!

Chrysalis is looking for gently used board games (such as Apples to Apples or Taboo) for butterflies to play during breaks.

If you have any you would like to donate please bring them with you to the upcoming boys' flight.

Agape.... (another way for the bugs to "feel the love")

Thanks for all of the wonderful agape for the November Girls' Flight. Be ready for the Boys' Flight, March 6-8. Check the website for updated numbers of bugs and team.

Thanks! Polly Richardson
(Agape Chair)

Welcome to the community's new Spiritual Director:

Pastor Beth Giller has graciously agreed to come on board as our new spiritual director. Beth has been involved in the community for many years. We are grateful for her continued support and guidance!

We also thank Pastor Mark Holbrook for his service to the community as the outgoing Spiritual Director.

Do you know someone who should be getting the Flight Plan and isn't?

If you or someone you know from Chrysalis has a new address please e-mail the correction to Erin at actionjac2@aol.com. Please send permanent address changes only, no college addresses.

Everyone needs to get the news so please help us update our mailing list.

Northwest Ohio Chrysalis

Office of Chrysalis

c/o Maumee United Methodist

405 Sackett St

Maumee, OH. 43537

“Return Service Requested”



Board of Directors

Spiritual Director	Beth Giller	spiritualdirector@nwochrysalis.org
Chairman	Rusty Coey	chairperson@nwochrysalis.org
Leadership	Beth Figley	leadership@nwochrysalis.org
Secretary/Treasurer	Sara Myles	secretarytreasurer@nwochrysalis.org
Agape	Polly Richardson	agape@nwochrysalis.org
Good Shepherd	Terry Roose	goodshepherd@nwochrysalis.org
Kitchen	Beth Morrill	kitchen@nwochrysalis.org
Logistics	Doyle Ayers	logistics@nwochrysalis.org
Newsletter	Erin Nowak	newsletter@nwochrysalis.org
Outreach	Vicki Adam	outreach@nwochrysalis.org
Registrar	Kris Jackson	registrar@nwochrysalis.org
Social	Sadie Albon	social@nwochrysalis.org
Sponsorship	Roseann Clark	sponsorship@nwochrysalis.org
Supply	Tim Mack	supply@nwochrysalis.org
Worship	Margie Smith	worship@nwochrysalis.org
Agape - Youth	Kerri McEwen	agapeyouth@nwochrysalis.org
Kitchen - Youth	Ben Hartford	kitchenyouth@nwochrysalis.org
Outreach - Youth	Josh Davies	outreachyouth@nwochrysalis.org
Worship - Youth	Daniel Rhollans	worshipyouth@nwochrysalis.org
Logistics – Youth	Brett Whisler	logisticsyouth@nwochrysalis.org